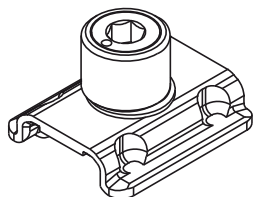


### PAWLS 009



#### Functions

Closing element for insertion, in combination with a suitably shaped rod, in the 15/20 mm sash channel.

#### Technical Features

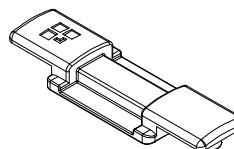
The pawl is applied directly on the manual quick-fitting rod. In order to install it you need to machine the connection rod.

For the adjustments and correct application on the profiles please refer to the table.

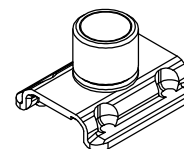
#### Materials

Stainless steel

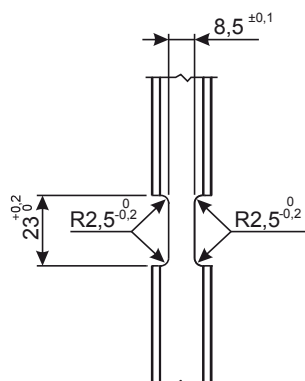
Article 01399



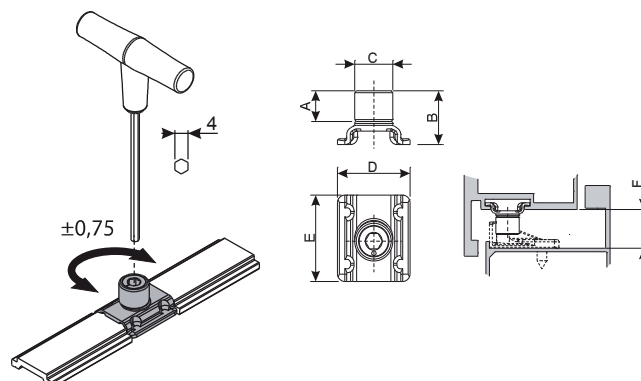
Article 04054



Rod machining



Adjustment



Item code	Description	PROFILE CROSS-SECTION	Type	A (mm)	B (mm)	C (mm)	D (mm)	E (mm)	F (mm)	Adjustment (mm)	Base Raw	Anodized Elox	Painted	Trend/Oro Brass	Pieces per pack
01373	LOCKING PAWL	C001-C002-C003-C004-C005-C006-C011-C012-C013-C014-C015-C016-C017-P001-P002-P003-P004-P005-P006-P007-P008-P009-P010	1	6,5	11,5	-	19,5	22,5	11,5	No	X				20
01394	LOCKING PAWL	-	2	8	14	10,3	19,5	22,5	16,5/17	+/- 0,75	X				100
01395	LOCKING PAWL	C001-C002-C003-C004-C005-C006-C011-C012-C013-C014-C015-C016-C017-P001-P002-P003-P004-P005-P006-P007-P008-P009-P010	2	5,5	11,5	10,3	19,5	22,5	11,5	+/- 0,75	X				100
01399	CLOSING PAWL BASE	C001-C002-C003-C004-C005-C006-C011-C012-C013-C014-C015-C016-C017-P001-P002-P003-P004-P005-P006-P007-P008-P009-P010	3	-	-	-	-	-	-	-	X				100
04052	LOCKING PAWL	C001-C002-C003-C004-C005-C006-C011-C012-C013-C014-C015-C016-C017-P001-P002-P003-P004-P005-P006-P007-P008-P009-P010	1	5,5	11,5	10,3	19,5	22,5	11,5	No	X				100
04054	LOCKING PAWL	-	1	8	14	10,3	19,5	22,5	16,5/17	No	X				100